

# TRANSFER FEED SCREWS

*The right solution for every operation.*



**The special feeder.  
Unique in Europe.**

**BULK  
CONVEYING  
VENTILATION  
CLEANING**



# SERIES GNA/GVA *The Classic.*

## STRAIGHT TRANSFER FEED SCREWS WITH REAR DELIVERY.

The GNA/GVA series is the classic among transfer feed screws. These transfer feed screws are especially suited to the filling of seed drills and fertilizer spreaders with low loading heights. This series is available in galvanized steel (GNA) or Nirosta design (GVA).



## PERFORMANCE OVERVIEW | TECHNICAL DATA

Standard

Special Accessory

— not available

Type	Ø mm / Pipe wall	Length m	Capacity t/h	Material (pipe / threads)	System	Folding system	Oil Volume l/min	Height Adjustment	Shut-off Valve	Pull Valve	E-valve	Flexible Hose	Telescope
GNA 609	150/2	3,00	25	Galvanized	With hopper	—	20	Standard	Standard	Standard	Standard	Standard	Standard
GNA 610	150/2	3,25	25	Galvanized	With hopper	—	20	Standard	Standard	Standard	Standard	Standard	Standard
GNA 709	180/2	3,00	35	Galvanized	With hopper	—	20	Standard	Standard	Standard	Standard	Standard	Standard
GNA 710	180/2	3,25	35	Galvanized	With hopper	—	20	Standard	Standard	Standard	Standard	Standard	Standard
GVA 609	150/2	3,00	25	V2A	With hopper	—	20	Standard	Standard	Standard	Standard	Standard	Standard
GVA 610	150/2	3,25	25	V2A	With hopper	—	20	Standard	Standard	Standard	Standard	Standard	Standard
GVA 709	170/2	3,00	35	V2A	With hopper	—	30	Standard	Standard	Standard	Standard	Standard	Standard
GVA 710	170/2	3,25	35	V2A	With hopper	—	30	Standard	Standard	Standard	Standard	Standard	Standard
GVA 809	200/2	3,00	50	V2A	With hopper	—	40	Standard	Standard	Standard	Standard	Standard	—
GVA 810	200/2	3,25	50	V2A	With hopper	—	40	Standard	Standard	Standard	Standard	Standard	—
GVA 909 S	220/2	3,00	70	V2A/ Galvanized	With hopper	—	40	Standard	Standard	Standard	Standard	Standard	—
GVA 910 S	220/2	3,25	70	V2A/ Galvanized	With hopper	—	40	Standard	Standard	Standard	Standard	Standard	—

# SERIES UHV

*Straight and Foldable Transfer Feed Screws.*

**ÜBERLADESCHNECKEN MIT RÜCKWÄRTIGER ABGABE, MECHANISCH KLAPPBAR.**

The UHV series is especially suitable for customers who wish to fill higher seed hoppers or drawn fertilizer spreaders and yet prefer the rear delivery. Despite the compact transport position, the transfer feed screws the UHV series enable a long reach.

The base mounting and switching between different trailers are easy to implement. The advantage of the UHV series lies in the 800 mm wide, open feed hopper, which makes it easy to eliminate blockages and backlogs in lumpy conveyed material.

**DETAILS:**

- 🌀 Mechanical backward folding.
- 🌀 All stainless steel.
- 🌀 Feed hopper, residue emptying
- 🌀 Height adjustment via winch Hydraulic motor.
- 🌀 One set of attachments & transport lock



**PERFORMANCE OVERVIEW | TECHNICAL DATA**

🌀 Standard    🌀 Special Accessory    — not available

Type	Ø mm / Pipe wall	Length m (unfolded)	Length m (folded)	Capacity t/h	Material (pipe / threads)	System	Folding System	Oil Volume l/min	Height Adjustment	Shut-off Valve	Pull Valve	E-valve	Flexible Hose	Telescope
UHV 713	170/2	4,00	2,10	35	V2A	With hopper	Mechanical	30	🌀	🌀	🌀	🌀	🌀	🌀
UHV 715	170/2	4,60	2,10	35	V2A	With hopper	Mechanical	30	🌀	🌀	🌀	🌀	🌀	🌀
UHV 814	200/2	4,00	2,10	50	V2A	With hopper	Mechanical	45	🌀	🌀	🌀	🌀	🌀	🌀
UHV 815	200/2	4,60	2,10	50	V2A	With hopper	Mechanical	45	🌀	🌀	🌀	🌀	🌀	🌀



**BULK  
CONVEYING  
VENTILATION  
CLEANING**



# SERIES DF

## Transfer Feed Screws with Side Delivery.

**SIDE-FOLDING TRANSFER FEED SCREWS ARE REAL ALL-ROUNDERS. THEY CAN REACH LOADING HEIGHTS OF 4.50M, EVEN WITH EXTREMELY TILTED TRAILERS.**

The advantages of this design lie in the high loading heights, the good reach and the compact transport position.

The mounting and changing of the screw from trailer to trailer is somewhat less complex with the other types, but the compact transport position makes this series ideal for driving longer distances. Compared to straight transfer feed screws - rigid (GNA/ GVA) or folding (UHV) – The DF screw has more effective transfer heights when tilting.

This model range (depending on the screwlength) guarantees:

- Maximum delivery heights (e.g. for delivery onto lorries during harvesting)
- Essential sideways reach (for feeding seed drills)
- Very compact transport position when folded (for driving long distances)

# SERIES DF

**HYDRAULICALLY FOLDABLE, HYDRAULICALLY HEIGHT-ADJUSTABLE.**



### DETAILS:

- Sideways foldable with hydraulic cylinder.
- In series with on-grip, reinforced, double helix in the feed area.
- Combination of stainless steel outer tube with galvanized steel helix (Series VS)
- All stainless steel (Series V).
- Height adjustment: via hydraulic cylinder
- Drive via hydraulic motor.



### PERFORMANCE OVERVIEW | TECHNICAL DATA

Standard

Special Accessory

— not available

Type	Ø mm / Pipe wall	Length m	Capacity t/h	Material (pipe / threads)	System	Folding System	Oil Volume l/ min	Height Adjustment	Shut-off Valve	Pull Valve	E-valve	Flexible Hose	Telescope
DF 920 VS	220/2	5,80	75	V2A/ galvanized	Flanged	Hydraulic	60	Standard	Standard	—	—	Standard	—
DF 1015 VS	250/2,5	5,40	120	V2A/ galvanized	Flanged	Hydraulic	80	Standard	Standard	—	—	Standard	—
DF 1315 VS	320/3	5,40	180	V2A/ galvanized	Flanged	Hydraulic	90	Standard	Standard	—	—	—	—

## SERIES DF

MECHANICALLY FOLDABLE,  
MANUAL HEIGHT ADJUSTMENT.

### DETAILS:

- Mechanical folding system (by hand).
- Height adjustment via winch
- On-grip, reinforced double helix in the feed area
- Design: Fully mild steel painted/ galvanized (Series S), combination stainless steel outer pipe with galvanized steel helix (Series VS), fully stainless steel (Series V)
- Drive via hydraulic motor



### PERFORMANCE OVERVIEW | TECHNICAL DATA

• Standard

• Special Accessory

— not available

Type	Ø mm / Pipe wall	Length m	Capacity t/h	Material (pipe / threads)	System	Folding System	Oil Volume l/ min	Height Adjustment	Shut-off Valve	Pull Valve	E-valve	Flexible Hose	Telescope
DF 715 V	170/2	4,60	35	V2A	Flanged	Mechanical	30	•	•	•	•	•	•
DF 716	180/2	4,80	40	Steel painted	Flanged	Mechanical	30	•	•	•	•	•	•
DF 817 V	200/2	5,10	50	V2A	Flanged	Mechanical	45	•	•	•	•	•	—
DF 817 VS	200/2	5,10	50	V2A/Steel	Flanged	Mechanical	45	•	•	•	•	•	—
DF 818 V	200/2	5,50	50	V2A	Flanged	Mechanical	45	•	•	•	•	•	—
DF 818 VS	200/2	5,50	50	V2A/galv.	Flanged	Mechanical	45	•	•	•	•	•	—
DF 918 VS	220/2	5,50	75	V2A/galv.	Flanged	Mechanical	60	•	•	•	•	•	—



## SERIES DF

**HYDRAULICALLY FOLDABLE,  
NOT HEIGHT ADJUSTABLE.**

The types DF1315 and DF1615 should be mounted only on dumper trucks as the body and rear wall are more stable and the vehicle frame is stiffer. This ensures better stability during transfer.

### DETAILS:

- Hydraulic folding system without side height adjustment
- Sideways folding with hydraulic cylinder
- Painted as version in mild steel.
- DF 1315 also in stainless steel 1 set of attachments
- Hydraulic motor with shut-off valve

### Optional for 400 mm (DF1615) transfer feed screws:

- Hydraulically swivelling discharge chute
- Rear view camera at the screw outlet
- Hydraulic volume regulation in the inlet
- Electro-hydraulic control unit

### ADVANTAGES:

- Large transfer heights
- High performance
- Transfer wagon replacement



## PERFORMANCE OVERVIEW | TECHNICAL DATA

Standard

Special Accessory

— not available

Type	Ø mm / Pipe wall	Length m	Capacity t/h	Material (pipe / threads)	System	Folding System	Oil Volume l/ min	Height Adjustment	Shut-off Valve	Pull Valve	E-valve	Flexible Hose	Telescope
DF 1315	330/3	5,40	180	Steel painted	Flanged	Hydraulic	100	—	Standard	—	—	—	—
DF 1315VS	325/3	5,40	180	V2A/ galvanized	Flanged	Hydraulic	100	—	Standard	—	—	—	—
DF 1615	400/3	5,40	240	Steel painted	Flanged	Hydraulic	160	—	Standard	—	—	—	—

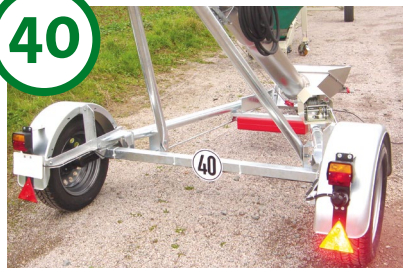
# SERIES HD

The mobile transfer feed screws.

FOR FARMERS AND AGRICULTURAL BUSINESSES, THE ADVANTAGES ARE CLEAR.

WITH THESE TRANSFER FEED SCREWS, YOU HAVE GOOD HELPERS FOR THE EVERYDAY WORK.

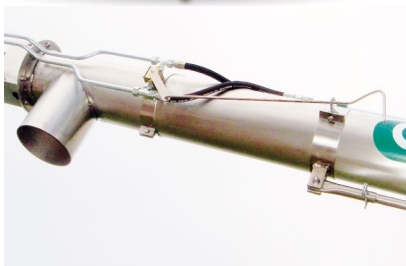
The flexible application possibilities make this mobile transfer screw an all-rounder. The robust chassis, the spring-mounted axle, the on-road approval and the lighting make the transfer screw easy to transport behind a trailer. Mobile transfer feed screws with a length of 8 m can also be used internally as an alternative, for example, for loading grain onto lorries.



Optionally also with on-road approval.



Adjustable trailer coupling



Additional shut-off valve at the outlet end



Hopper attachment / hopper elevation



## PERFORMANCE OVERVIEW | TECHNICAL DATA

Standard

Special Accessory

— not available

Type	Ø mm / Pipe wall	Length m	Capacity t/h	Material (pipe / threads)	System	Folding System	Oil Volume l/min	Height Adjustment	Shut-off Valve	Pull Valve	E-valve	Flexible Hose	Telescope
HD 722 VT	170/2	6,50	35	V2A	With hopper	—	40	—	Standard	Standard	Standard	Standard	Standard
HD 822 VT	200/2	6,50	50	V2A	With hopper	—	45	Special	Standard	Standard	Standard	Standard	—
HD 826 VT	200/2	8,00	50	V2A	With hopper	—	45	Standard	Standard	Standard	Standard	Standard	—
HD 922 VT	220/2	8,00	75	V2A/verzinkt	With hopper	—	60	Standard	Standard	Standard	Standard	Standard	—
HD 926 VT	220/2	8,00	75	V2A/verzinkt	With hopper	—	60	Standard	Standard	Standard	Standard	Standard	—
HD 926 VT-HK	220/2	8,60	75	V2A/verzinkt	With hopper	Hydraulic	60	Standard	Standard	Standard	Standard	Standard	—

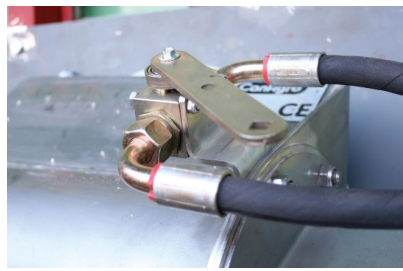
Optional for the HD series: On-road approval up to 40 km/h (as special equipment for an additional charge).



**ACCESSORIES - TRANSFER FEED SCREWS**



OPERATION VIA SHUT-OFF VALVE



OPERATION VIA PULL VALVE



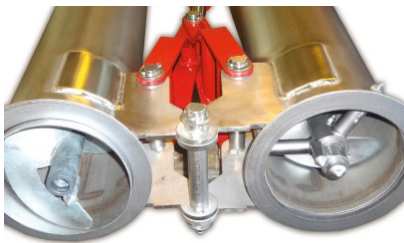
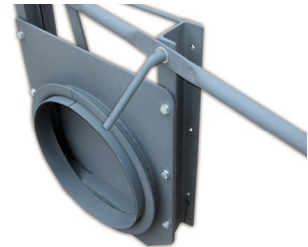
MANUAL DIRECTIONAL VALVE 3-SECTIONS



SOLENOID VALVE WITH SWITCH



MOUNTING BRACKET WITH INLET REGULATION FOR SERIES DF



CENTRE BEARING (FROM Ø 220 M)



TELESCOPIC DISCHARGE PIPE



WORKING SPOTLIGHT



CAMERA SYSTEM WITH MONITOR



HYDRAULICALLY OPERATED GRAIN HATCH

ELECTRO-HYDRAULIC CONTROL - OPERABLE VIA REMOTE CONTROL

Your Sales Partner:

**CanAGRO GmbH**

**Emleben Site**

Schwabhäuser Straße 1 99869 Emleben, Germany  
Telephone: +49 (0)3621 514470, Fax: +49 (0)3621 514472

**Wiesbaden Site**

Riedhof 65207 Wiesbaden, Germany  
Telephone: +49 (0)6122 2262  
Fax: +49 (0)6122 13200  
E-mail: info@canagro.de

[www.canagro.de](http://www.canagro.de)

**BULK  
CONVEYING  
VENTILATION  
CLEANING**