

## MOBILE SCREW CONVEYORS IN STAINLESS STEEL (V2A/ 1.4301)

We produce screw conveyors also in full from stainless steel or on request in combination of a stainless

steel cover with galvanized steel coil for use of mineral fertiliser or salt (municipal use).



## MOBILE GRAIN SCREW CONVEYORS WITH LIGHT CARRIAGE

The screw conveyors correspond to the installation of a standard screw conveyor with outlet-end motor. They are additionally fitted with a

simple carriage for use within the business, for feeding manure distributors or sowing machines from the yard.

### TECHNICAL DETAILS

- Design: varnished steel, galvanized steel or stainless steel (V2A)
- Diameter: 127 mm, 150 mm, 170 mm/180 mm
- Length: 5 m, 5.50 m, 6 m
- Electric engine or hydraulic engine

For transport on the road, this type of carriage is only conditionally suitable.



## STATIONARY CONVEYOR SCREWS *Stationary and still flexible.*

For stationary installation we provide screw conveyors from a diameter of 127 mm to 250 mm in varnished steel design or also in stainless steel (1.4301) in full on customer request.

Starting from the production or basic lengths of 3 and 6 m, they can be extended with 1.520 m or 3 m segments. In the catchment area, the stationary screw conveyors are fitted with a feed basket by default. On customer request,

they can, however, also be fitted with steel inlet funnels or feeds (e.g. round or square).

As the screws are made in full at CanAgro, we are happy to consider special customer requests regarding length and design on request.

### TECHNICAL DETAILS

- Length: 3.30 m – 20 m
- Power: 15 t – 100 t
- Diameter: 127 mm – 250 mm
- Execution: steel, stainless steel



## FEED SCREWS

*The flexible provider for mobile grain screw conveyors or tube belt conveyors*

The shunting on feed areas of the following devices is simplified and the unloading process thereby shortened. The light carriage and the rollers on the feed funnel make it easy to swivel the feed screw easily to the trailer, easy conversion is effortless in the handling by a person. Feed screws are frequently used in tight spaces, e.g. in passages through buildings. In this case, the main conveyor unit is passed and the feed screw swivelled behind the trailer. In low buildings, in which the tilting of the trailer or truck is not possible, the feed screw can, for

instance, be used as a feeder from outside the building, as additional flexible intake, as an elevator or for feeding on grain sump.

### TECHNICAL DETAILS

- Conveyor length: 3 – 5 m
- Tube diameter: 200 mm (50 t/h), 250 mm (80 – 100 t/h)
- Execution: steel/stainless steel
- Standard design: straight design with feed funnel (1.0 x 0.8 m)
- Special execution: angled version with feed funnel 3 m (for reverse tilting of a trailer or truck along complete width)



## FLAT STORAGE COLLECTION SYSTEM

*Removal system for grain in the flat storage as subsequent fitting of the screw conveyor with carriage.*

The flat storage collection system can be used for storage and removal of bulk goods. By using the flat storage feed and collection system, damage to ventilation channels and tubes can be avoided.

### TECHNICAL DETAILS

- Output: 50 t/h, 80 t/h
- up to 100 t removal from a servo position
- no damage to ventilation channels or tubes



**Over 25 YEARS of family-owned quality and service.**

Your distributor:

### CanAGRO GmbH

**Emleben**  
Schwabhäuser Straße 1 · 99869 Emleben  
Telephone: 0049 (0)3621 514470  
Fax: 0049 (0)3621 5144722

**Wiesbaden**  
Riedhof · 65207 Wiesbaden  
Telephone: 0049 (0) 6122 2262  
Fax: 0049 (0) 6122 13200  
[www.canagro.de](http://www.canagro.de)

**SCHÜTTGUT  
FÖRDERN  
REINIGEN  
BELÜFTEN**

**CanAGRO**

## SCREW CONVEYORS

*The right solution for every operation.*



**SPECIAL FEED.  
Unique in Europe.**

Our grain feed worms and individual overload worms are equipped with a coil on a grip. The special feed is an important technical feature which considerably increases productivity.

**SCHÜTTGUT  
FÖRDERN  
REINIGEN  
BELÜFTEN**

## MOBILE GRAIN SCREW CONVEYORS EMD SERIES

High-performance screw conveyors with chassis.

Over the years we have established ourselves as a specialist in the area of mobile conveyor technology. The screw conveyors were increasingly improved over the years and adjusted to the needs of the German market. Users of our conveyor screws are delighted about a large number of accessories and aids in everyday life.

### TECHNICAL DETAILS

- Conveyor output: 25 t/h – 120 t/h
- Tube length: 7.80 m – 21.30 m
- Conveyor heights: up to 14.50 m
- Special feed



### Robust carriage

- suitable in particular for flexible, powerful also cross-business use
- lots of free space in the feed and outlet areas
- recessed chassis – more overlap for the optimum loading of low-bay warehouses
- all devices can be adjusted steplessly via a robust winch in the conveyor height

### The suitable drive for every operation

- Petro engine
- Electric engine
- Two-level electric engine
- Power take-off
- Hydraulics engine
- Combined drive - electric engine and hydraulics engine



PTO transmission



Electric and hydraulics engine



Hydraulics engine

### Central drive / Drive concept

The transfer of force from the electrical motor is with large-dimensioned belt pulleys onto the angle transmission. From there, the torque is transferred to the worm head via a drive shaft and the geared down sprocket wheel is transferred to the conveyor worm. The torque is geared down several times and brought dragging to the conveyor worm.

### THIS TYPE OF TRANSMISSION ALLOWS:

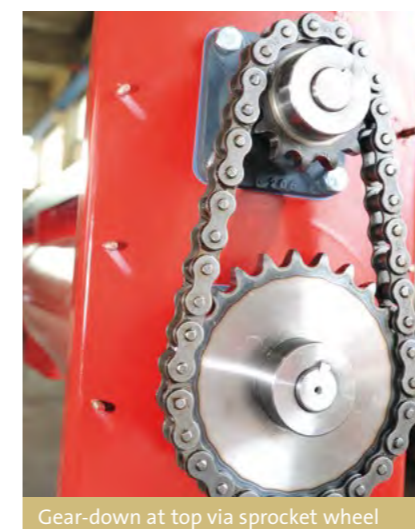
- Drive unit in the bottom third of the screw tube
- Larger effective protrusion from the wheel to the outlet
- Good weight balance/handling
- Lots of free space in the inlet and outlet areas for flexible options of use
- Optimum speed range of 450 RPM



Large-sized belt pulleys for the optimum transfer of force



Upwards directed drive shaft

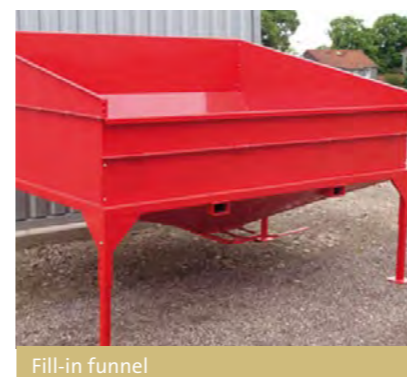


Gear-down at top via sprocket wheel

### ACCESSORIES - SCREW CONVEYORS



Ejection plate – swivellable



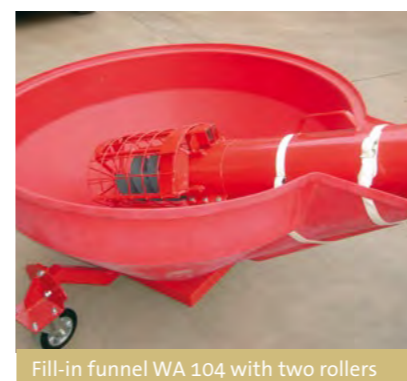
Fill-in funnel



Cross traverse axis



Fill-in funnel WA 103 without rollers



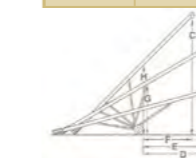
Fill-in funnel WA 104 with two rollers



Fill-in funnel WA 105 with four rollers

### TYPES

Type	Dia- meter (mm)	Length (m)	Power (t/h)	Heights and Ranges (m)								Wheel base (cm)
				A	B	C	D	E	F	G	H	
EMD 831	200	9,30	50	2,34	4,59	6,55	4,50	3,68	3,00	2,50	3,68	180
EMD 836	200	10,80	50	2,74	5,36	7,62	6,00	5,00	4,00	3,00	4,39	210
EMD 841	200	12,30	50	2,92	6,15	8,71	7,60	6,00	4,50	3,53	5,00	230
EMD 846	200	13,80	50	3,01	6,92	9,63	8,00	6,75	5,00	3,93	5,51	230
EMD 851	200	15,20	50	3,62	7,62	10,82	8,21	6,80	5,00	4,32	5,82	240
EMD 856	200	16,80	50	3,50	7,92	11,30	8,50	7,00	6,00	4,51	6,32	270
EMD 861	200	18,30	50	3,76	8,63	12,55	8,50	7,50	6,00	4,90	7,40	290
EMD 1031	250	9,30	90	2,34	4,59	6,55	4,50	3,68	3,00	2,50	3,68	180
EMD 1036	250	10,80	90	2,74	5,36	7,62	6,00	5,00	4,00	3,00	4,39	210
EMD 1041	250	12,30	90	2,92	6,15	8,71	7,60	6,00	4,50	3,53	5,00	230
EMD 1046	250	13,80	90	3,01	6,92	9,63	8,00	6,75	5,00	3,93	5,51	230
EMD 1051	250	15,30	90	3,62	7,62	10,82	8,21	6,80	5,00	4,32	5,82	240
EMD 1061	250	18,30	90	3,50	7,92	11,30	8,50	7,00	6,00	4,51	6,32	270



The heights and ranges are shown in the table.

## SPECIAL FEED

Unique in Europe.

The CanAGRO grain conveyor screws as well as the majority of the Auger screws are equipped with a special feed in the draw-in area. This special feed is unique in Europe and can only be found in CanAGRO products. Due to the special construction, with a higher service life as a whole, approx 15% more feed capacity can be achieved compared to standard design conveyor spirals.

The special feed guarantees virtually consistent performance with a steep conveyor or clearance angle. As a result, there is increased collection of feed material at lower speeds (up to 450RPM) and gentle conveyance of the grain.

- Higher longevity
- 15% additional performance (compared to similar straight standard conveyor coils)
- Improved uptake of the goods conveyed also in the event of steeper conveyor angle
- High performance at low rotation speeds (max. 450 r/min)
- Gentle conveyance of the grain

